

NRHEG Public School

Independent School District No. 2168



High School
306 Ash Ave. South
New Richland, MN 56072
(507)465-3205
Fax (507)465-8633

Elementary School
600 School St.
Ellendale, MN 56026
(507)684-3181
Fax (507)684-2108

Secondary Principal Board Report 2-13-19

Estimated student enrollment (These numbers may not be exact)

	6	7	8	9	10	11	12	Total
M	34	36	37	27	39	36	34	243
F	37	33	45	40	40	23	32	250
Totals	71	69	82	67	79	59	66	493

From Miles Otstot: "The band had 9 students selected for the first annual Gopher Conference Honor Band in Hayfield this past Saturday, February 9. The choir also had 4 students selected. The students had a great concert and represented our school very well!"

From Deb Bently: "Members of the speech team are gearing up for the start of their season, and will be taking part in Saturday invitational tournaments for the last half of February and through March, with sub-section competition on the evening of March 25. Leaders of the class of 2019 are turning their attention to planning some of the spring senior activities, including a possible class trip, senior service day, and end-of-year celebrations. The design for the senior shirt is nearly finalized and orders will be placed in the next few weeks. A readers' theater group of 7 volunteers is preparing Horton Hears a Who for the "Read Across America" events early in March. Performers will present the piece for the elementary students and at area senior care facilities on March 2."

From Dan Sorum: "I am pleased to share with you the opportunity awarded to our school to participate in a pollinator program. This includes with it a \$1000 award for materials and to pay students to work with the

Dale N. Carlson, Superintendent

David A. Bunn, High School Principal

Douglas A. Anderson, Elementary Principal

program. See award letter below. Also, the FFA Small Animal team qualified for state competition last month.”

January 26, 2019

Dan Sorum
NRHEG High School



Dear Dan,

Thank you for your application to participate in Sand County Foundation’s Pollinator and Monarch Habitat Grant Program. We are pleased to inform you that your proposal has been selected for funding. We are excited to have you, your students, and your community be part of this effort. Yours is one of ten high schools receiving this grant in Minnesota.

To confirm your participation, please complete and return the attached grant acceptance form and W-9 form by February 4th to the email address below. We will then issue a check for \$1,000 to the name listed in Line 1 of the W-9 form. This may be the school district, FFA chapter, or other entity, but not an individual person.

In February (date TBD) we will provide a one-hour instructional webinar. Minnesota Native Landscapes will cover native plant propagation, appropriate site preparation before transplanting, and post-transplanting management. Your live attendance is strongly encouraged, but the webinar will also be recorded for future playback.

In late March (date TBD) you will receive your seedlings and trays. Minnesota Native Landscapes will ship to you five trays of small seedlings (one forb species per tray, approximately 1”x1” cells) and eighteen empty 36-pot trays (approximately 2”x2” cells) into which your students will transfer the seedlings to continue growing. You will be responsible to provide all other materials (rooting media, greenhouse supplies, etc.). We will provide further details during the webinar. We will provide at least one week notice before shipping. Please note that late winter weather may influence how soon the seedlings are ready for shipping.

We will request that you complete a brief progress report by June 15, 2019, and a final report by September 30, 2019. We will provide the reporting form in the coming weeks.

To help ensure the success of this grant program, Sand County Foundation has contracted the services of Cynthia Ficenec to facilitate the steps above, and to be your lead point of contact. Cynthia’s experience bridges native plant ecology (with a M.S. in Conservation Biology) and math/science education (she is a part time Gifted and Talented Education learning aide for grades 3-5) and she’s very enthusiastic to be helping support your work. And in full disclosure, as the

last name suggests, Cynthia is my spouse. Feel free to email her and expect to hear updates from her soon.

Please return your completed forms to Cynthia Ficenecc at cynthia.ficenecc@gmail.com

This program is made possible by Enel Green Power North America, Inc., owner and operator of the Aurora Distributed Solar Project.

Sand County Foundation appreciates your initiative and we look forward to hearing about your progress!

Sincerely,



Craig Ficenecc
Program Director
Sand County Foundation

Attached: Grant Acceptance Form, IRS Form W-9

From Jennifer Fredrickson: "Congratulations to the NRHEG Music Department on their successful day at the 1st Annual Gopher Conference Honor Band/Honor Choir at Hayfield High School on Saturday, February 9! Participants were: Jayna Domeier, Karena Strom, Aubrey Fischer, Cora Harpel, Lawren Deml, Jayna Finseth, Maggie Maloney, Michiah VanSyckel, Jadyr Surat, Alexander Combs, Minna Lim, Aubrey Johnson and Dylan Loken. The students experienced a fabulous day of music making with seven other schools, two guest conductors all culminating in a final afternoon concert. Minna Lim & Alexandra Combs were chosen as soloists during the choir portion. What a true honor for all involved!"

Here was the agenda from our two hour late start. Special thanks to the Leadership Team, Robin Eder, Brooke Krohn, Susan Burris (From MDE), and Mary Jenatscheck (Principal Leadership Specialist, Regional Center of Excellence)

NRHEG 2-Hour Late Start

Feb 11th, 2019

Mid-Year Check In & Planning Forward

1. Welcome, Review Agenda and Reflect on Changes this year (8:00 to 8:20 ((Leadership Committee Help Lead Conversations and take notes to bring back to team)))
 - a. What have you changed in your classroom since starting in September?
 - i. Your instruction around the standards and ELO's? Are you using formative assessment data to guide your changes?
 - ii. Your teaching delivery? Are you trying different strategies or techniques to address the ELO's? Are you using formative assessment data to change in this area?
 - iii. Your approach to building relationships with the kids? Just like us, kids change all the time...are we doing the same?
2. Building Changes (8:20-8:40) (Dave)
 - a. Leadership Team is up and running
 - b. Meeting Monthly- Staff involved
 - c. Discussing professional development needs based on staff feedback and the plan we shared in August
 - d. Helping to lead the way on professional development days (Circle Group Leads today)
 - e. Walk-thrus started in Qtr 2 and will continue
3. Next Steps from Staff Feedback
 - a. Student Engagement – Technical Research vs. Adaptive/Practical application
 - b. Differentiation – Formal research vs. Practical application
 - c. Building our capacity (learning) from each other – Strengths Based Leadership
 - d. Real examples from within your context
4. REACH Program (8:40-9:30) Robin and Brooke
 - a. Description and Purpose (Why schools choose to use start this work?)
 - b. Your locals results
 - c. Connections to your Student Engagement and Differentiation (Leadership Committee Help Lead Conversations and take notes to bring back to team)
 - i. Reflecting on what you just heard, what do you already do in your classroom or interactions with students to increase student engagement if your formative assessments demonstrate that is a need? How could you make changes to strengthen that engagement?
 - ii. What do you currently do to meet kids where they are and move them forward in their learning (differentiate)? How

could you make changes to do that more often and with a higher level of effectiveness?

- iii. Bring some ideas to discuss these two questions in PLC's this month? OR should we do this in PLC's next month?

Here is a slide that I shared with staff about traits we may need to teach kids as they are not innate.

Hardwired vs. Learned Emotions

Taught	Hardwired	Taught
<ul style="list-style-type: none">• Humility• Forgiveness• Empathy• Optimism• Compassion	<ul style="list-style-type: none">• Sadness• Joy• Disgust• Anger• Surprise• Fear	<ul style="list-style-type: none">• Sympathy• Patience• Shame• Cooperation• Gratitude

The emotional brain can be represented by a keyboard on which children from poverty use fewer keys than well-off children. The six responses represented by the darker shading on the keyboard and in the center box are hardwired in our DNA. The responses represented by the lighter shading must be taught.

Jensen, 2009

*** Encourage & teach behaviors we don't see in school....**

We are looking at getting Infintec which would provide some online training for staff. We have a webinar next Wednesday, February 20. See brochure on next page.

Infinitec

- Online professional development opportunities
- Curriculum supports and resources
- Over 3,100 digital textbooks and novels of accessible instructional materials
- 600+ video presentations
- ENGAGE Learning Administration System
- Private Content Hosting
- Searchable app database
- Access to Leadership & MN teacher licensure videos through MASA partnership
- Downloadable SmartSheets for devices
- Downloadable Universal Design Guides
- Hardware and software discounts



Infinitec

7550 W 183rd Street
Tinley Park, IL 60477

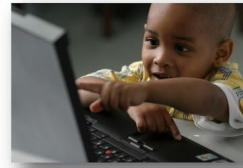
Phone: 309.431.0642
Tech Support: 800.361.0270
E-mail: mbettlach@ucpnet.org



Revised February 20, 2018



Helping All Learners Reach
Their Potential
Through Technology



Our Mission:
*To Advance Independence and
Promote Inclusive Opportunities
for Diverse Learners
Through the Use of Technology*

Helping All Learners Reach Their Potential Through Technology

Who We Are

Infinitec, which stands for *Infinite Potential through Technology*, is the technology program of UCP Seguin of Greater Chicago. The mission of Infinitec is to advance independence and promote inclusive opportunities for children and adults through technology. We are a member-based organization currently supporting Illinois, Kansas, Minnesota and Pennsylvania.

Membership with Infinitec enables Minnesota teachers and direct service school staff to have access to a distinctive compendium of teaching resources and custom-developed training materials. An online collection of instructional resources offers educators an opportunity to learn about disabilities including autism, as well as content areas such as reading, writing, and math. A searchable app database guides decision-making by identifying features of apps for instructional, compensatory and therapeutic purposes.



What We Offer

Infinitec offers four pillars of service:

- ♦ **Training and Education**, includes online professional programs, plus paraprofessional required trainings and testing for credit.
- ♦ **Information Services** consisting of extensive Web and hard copy resources.
- ♦ **Access to Expertise** including access to highly experienced technical assistance staff.
- ♦ **Equipment Services** including discount purchase programs.

A password-protected Web-based portal (myinfinitec.org) offers educational staff access to a range of curriculum supports and professional learning opportunities 24/7. There are over 600 presentations from experts in the field and strategies for implementing technology with at-risk and special education students. Other components include online quizzes for professional development credit, resource and research links, pre-made differentiated lesson plans, summarized instruction sheets on how to use common assistive technology devices and alternative activities.

An additional innovative resource is InfiTEXT, an online, accessible instructional materials collection which provides access to over 3,000 digital textbooks and novels for qualified K-12 students with print disabilities.



ALSO

The ENGAGE Online Training Administration System from Infinitec

engages your district's staff in online training by enabling you to assign or recommend presentations from the nearly 600 trainings located on myinfinitec.org. ENGAGE also allows you to produce activity reports that help track the progress staff members are making on their assigned or recommended activities.

Our **Private Content** feature lets you integrate your agency's internally developed training videos into the Online Classroom and the ENGAGE Training Administration System.

Membership

Infinitec's participation fee is \$55/child enrolled with \$750 minimum and \$9,999 maximum.

How To Join

School districts and charter schools interested in Infinitec services are asked to contact Mary Bettlach to receive a copy of the Minnesota Infinitec Agreement.

Mary Bettlach can be reached at 309.431.0645 or mbettlach@ucpnet.org.

Infinitec
Tinley Park, IL 60477
Phone: 309.431.0642
Tech Support: 800.361.0270
E-mail: mbettlach@ucpnet.org